

SUCCESS STORY

GOING DIGITAL

Excella optimizes cleanroom production with advanced HMI technology from Systec & Solutions



GOING DIGITAL

Excella optimizes cleanroom production with advanced HMI technology from Systec & Solutions

Excella stands for the highest quality standards in manufacturing – whether it’s a 100-gram batch or 20 tons. All processes strictly follow GMP guidelines. To further enhance production safety, 24 MODI displays have been installed as cleanroom hardware at the Excella site in Feucht, along with the implementation of the new LSR.signage software from Systec & Solutions.

The modernization of the cleanroom equipment was necessary for two main reasons. First, a custom-developed software had been in use, which required manual data entry – a time-consuming and error-prone process. Second, updates to the existing MES system made it possible to access live data from rooms and machines, significantly boosting optimization potential.

In search of a suitable solution, Excella turned to Systec & Solutions, a renowned manufacturer of GMP-compliant, all-in-one hardware solutions with certified software. The company had already proven itself in high-containment areas of pharmaceutical production with its mobile TROLLEY solutions.

Easy installation with the Easy Click Magnetic Mount System

The choice of hardware was quickly made.

“The MODI displays from Systec & Solutions turned out to be the best retrofit solution,”

explains Dennis Wild, Digitalization Project Manager at Excella. The HMI systems are installed flush with the wall using the user-friendly Easy Click Magnetic Mount System.

An installation frame with a recessed housing is permanently mounted in the wall and connected to a cable. Once the MODI unit is placed into this setup, magnets automatically position it correctly. Finally, the seams are sealed with silicone.

This system is also maintenance-friendly: for servicing, the MODI units can be easily removed from the frame after removing the silicone – and just as easily reinstalled and resealed. A total of 24 MODI 110 IIoT HMI room displays are now in operation at the Feucht facility.



MODI 110 – IIoT HMI room display

These displays show real-time data from machines and rooms via the MES, as well as room-specific information from the building management system (BMS) – all on a single screen, seamlessly integrating both systems.

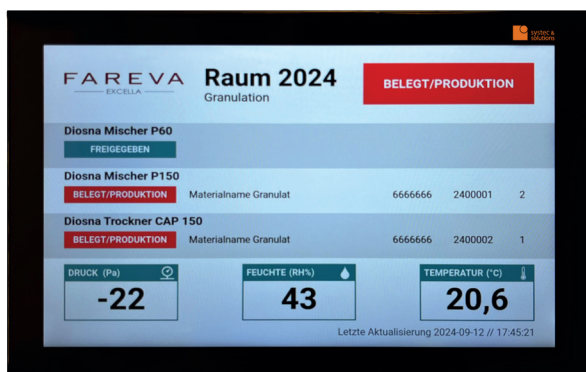
“The displays also impress with their professional overall look,”

emphasizes Dennis Wild. They are specifically designed for use in GMP environments. The IP65-rated glass touchscreens can be easily operated with cleanroom gloves and are resistant to solvents. “That’s especially important in API production,” Wild notes.

Digitalization and automation with new software

Excella is taking another step forward in safety and precise documentation – especially in high-containment areas of pharmaceutical and API production – through digitalization and automation. To do this, the company implemented the LSR.signage software solution from Systec & Solutions, which manages data display and screen control.

This software is designed for paperless production and automated processes. It displays data in real time using web-based dashboards, eliminating potential sources of error. MES data is automatically shown on the room displays along with safety data and environmental readings from building systems – such as temperature, humidity, and airlock differential pressure. Any anomalies are highlighted with color indicators. For instance, production staff can immediately respond to a room temperature deviation. With automation, validation of displayed data is also possible.



MODI 110 with real-time data transmission

The software also includes Excella's corporate logo, increasing user acceptance internally and building trust with external partners such as customers and auditors.

To ensure full compliance with all relevant GMP regulations, an installation qualification (IQ) was conducted. IQ templates were developed for the installation of LSR.signage and used in the process. Additional templates were created for validating the displays and the data shown on them. This allowed the entire system – from source data to room display – to be validated.

The investment in MODI displays and LSR.signage software has been a complete success for Excella. Production staff are relieved from manual tasks, data is always up to date, and the professional impression conveyed by the displays in production should not be underestimated.

“The implementation of LSR.signage was fairly straightforward, and Systec & Solutions supported us with a lot of expertise. The software licensing model is also really fair, making this a step we were happy to take.”

says Dennis Wild. For Excella's cleanrooms, he's found the right partner in Systec & Solutions.

Interested?

If you have questions or would like to explore this topic further, feel free to contact us. Our team is happy to assist and provide you with any additional information you may need.



PATRICK KUEHLE

T: +49 721 66351143

E: pak@systec-solutions.com

W: systec-solutions.com

Systec & Solutions GmbH
Wilhelm-Schickard-Straße 9
76131 Karlsruhe
Germany